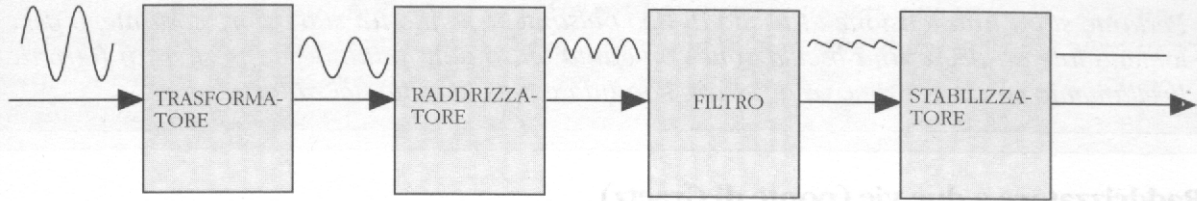


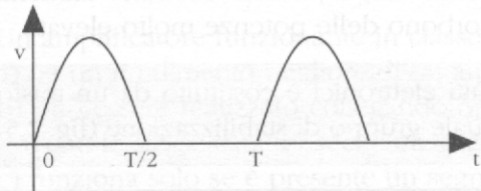
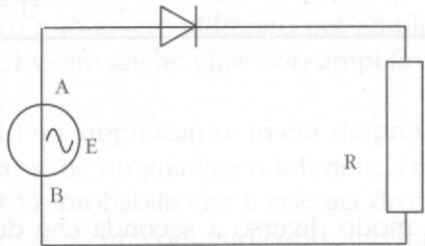
DALLA RETE DI
DISTRIBUZIONE
DELL'ENERGIA
ELETTRICA

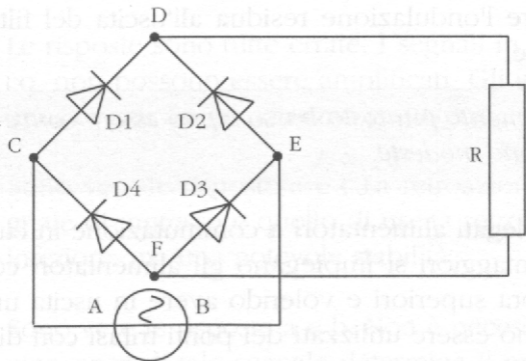
```
graph LR; A[DALLA RETE DI DISTRIBUZIONE DELL'ENERGIA ELETTRICA] --> B[ALIMENTATORE]; B --> C[ENERGIA ELETTRICA CON CARATTERISTICHE DIFFERENTI DA QUELLA DI ENTRATA];
```

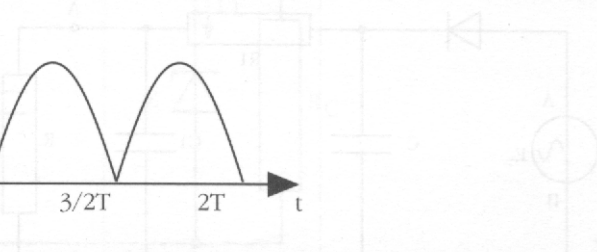
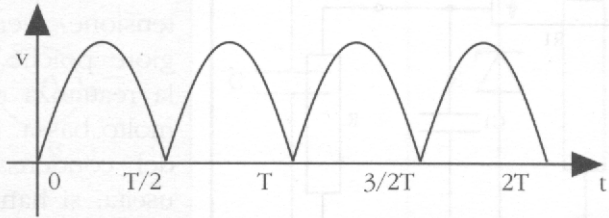
ALIMENTATORE

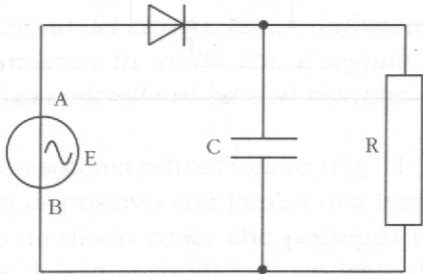
ENERGIA ELETTRICA
CON CARATTERISTICHE
DIFFERENTI DA QUELLA
DI ENTRATA

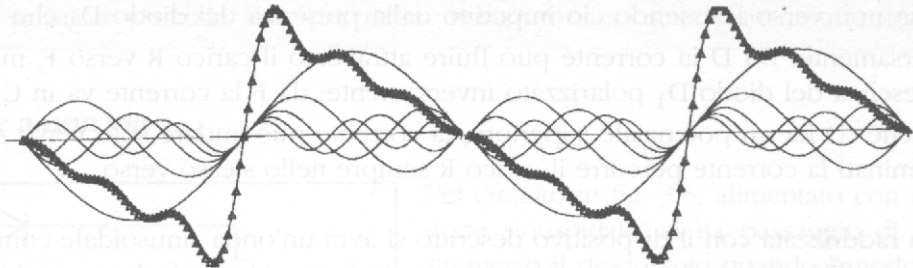


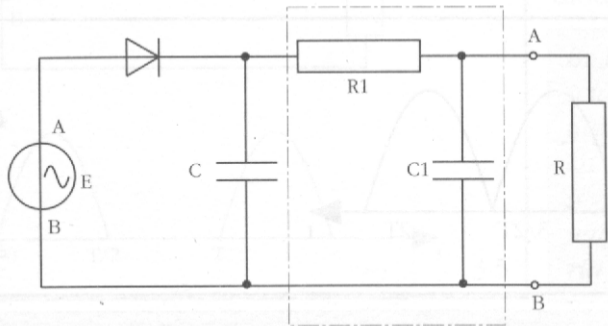


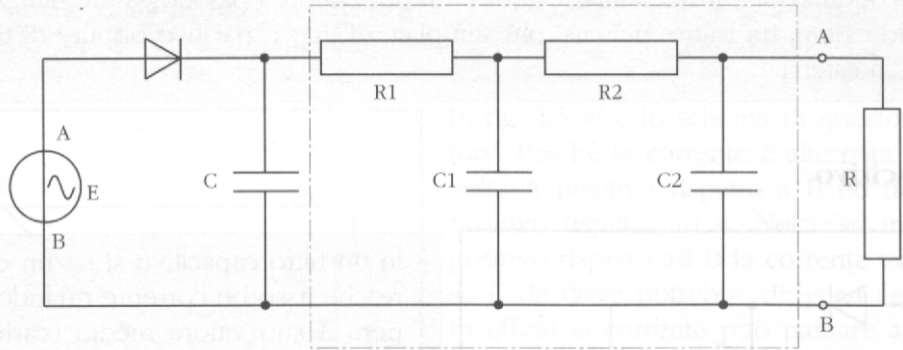


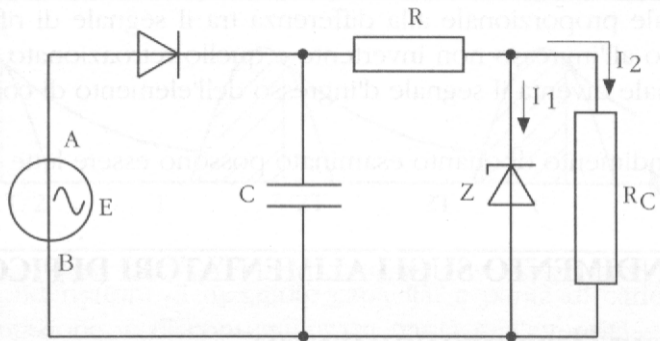


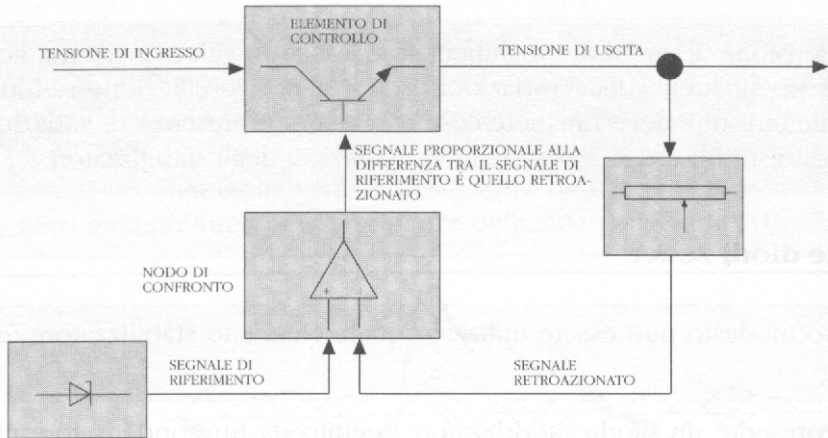


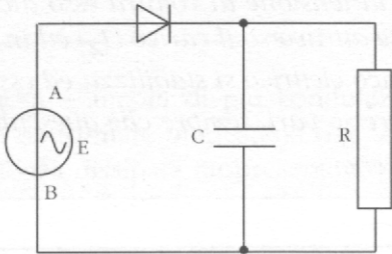


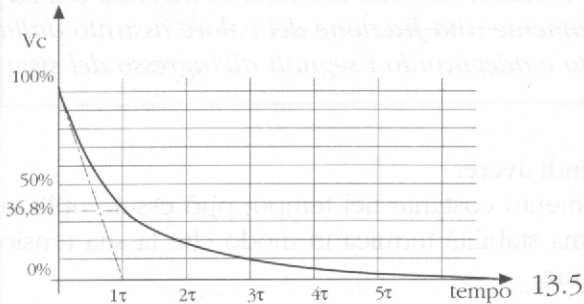


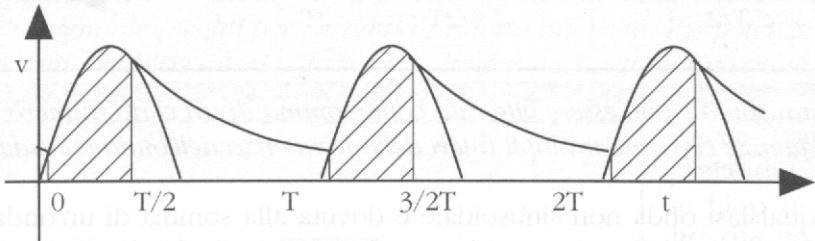


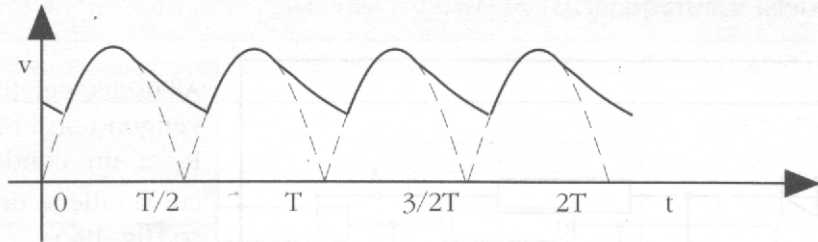


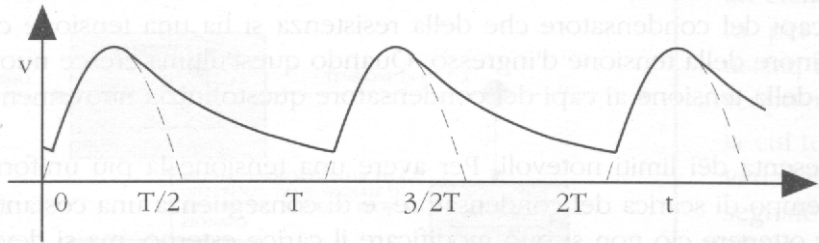


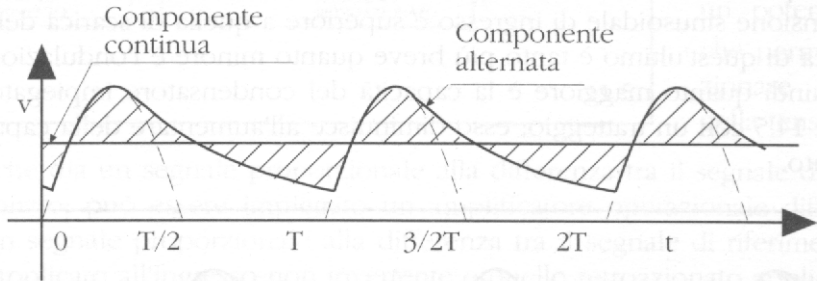


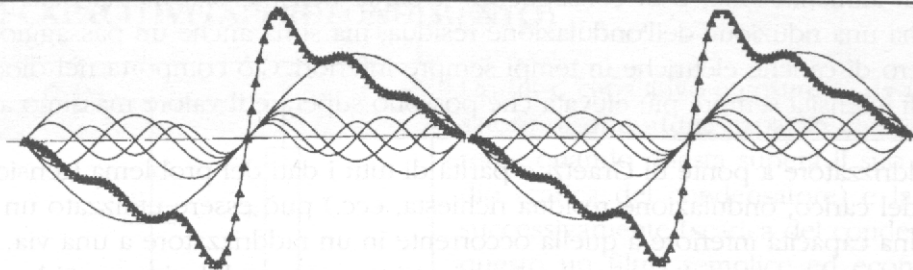


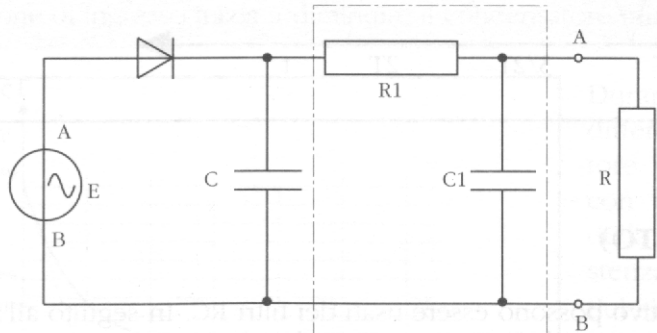


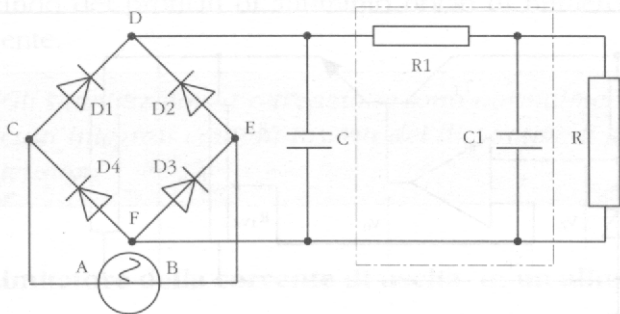


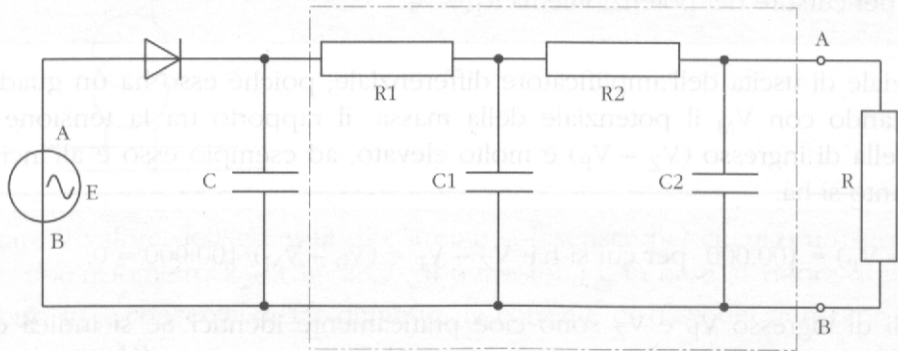


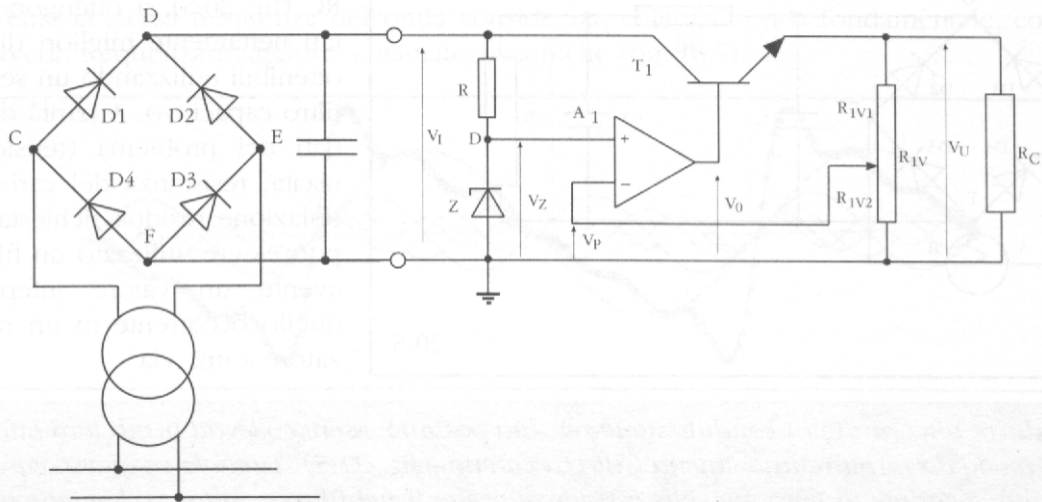


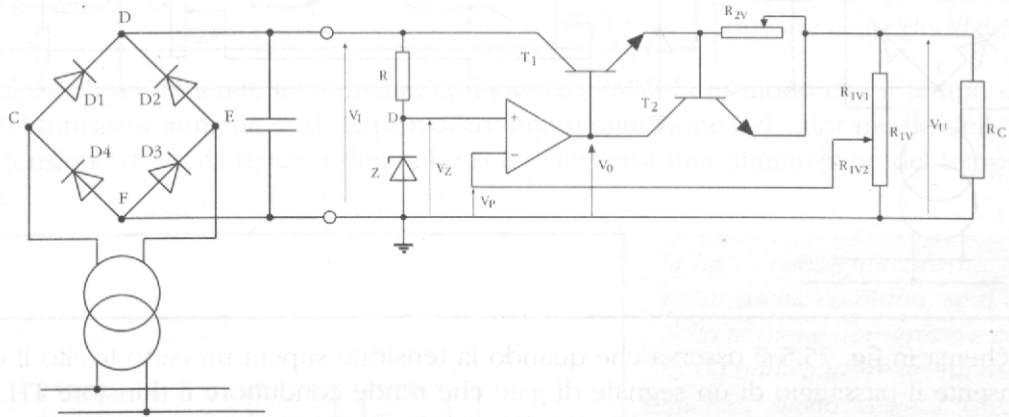


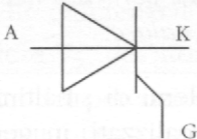




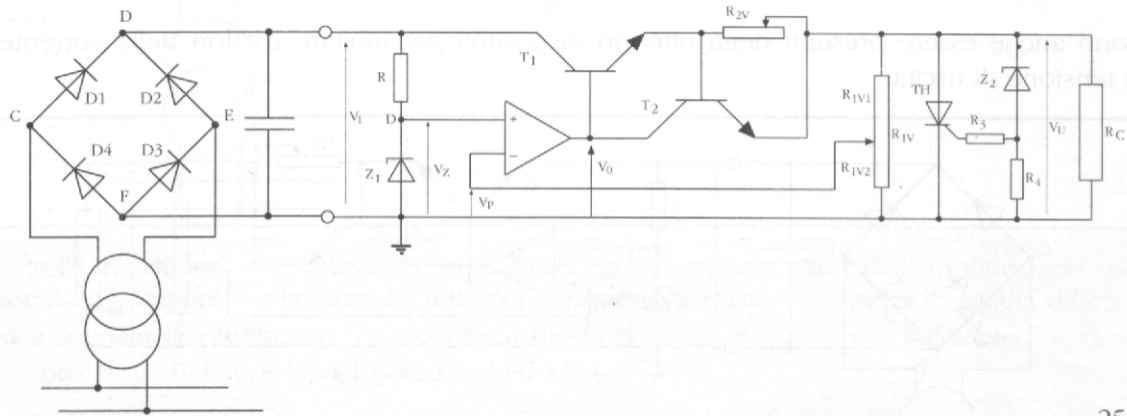


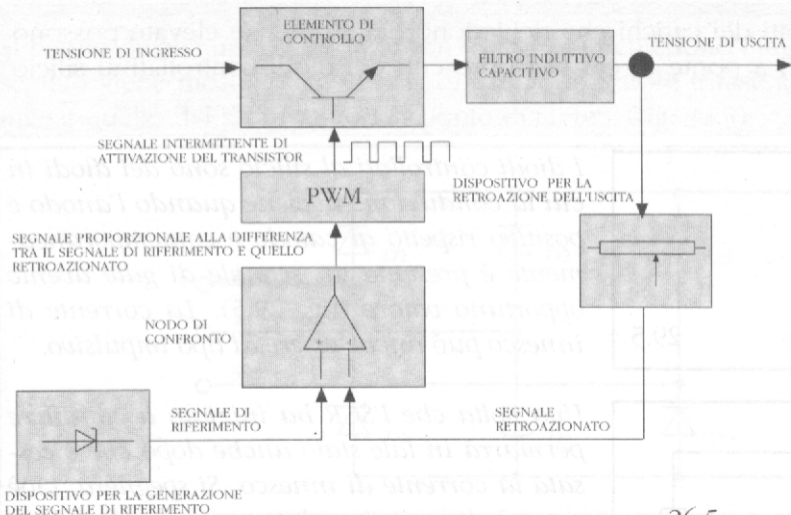


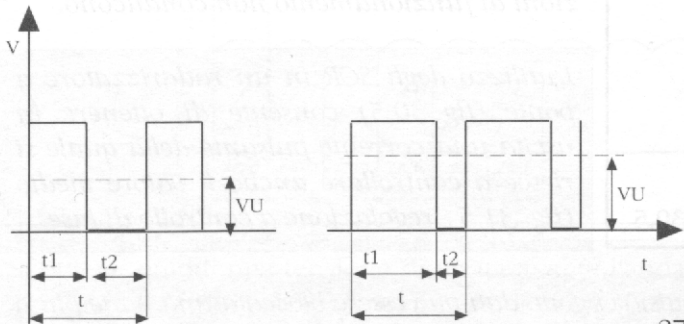


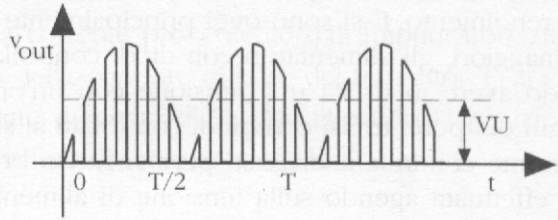
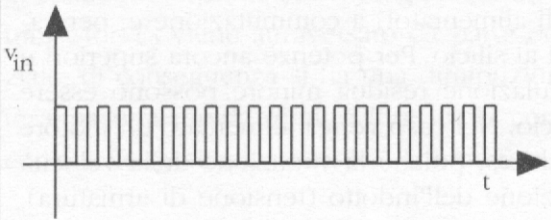


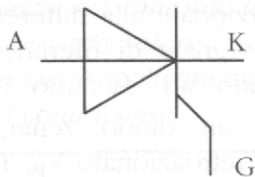
24.5



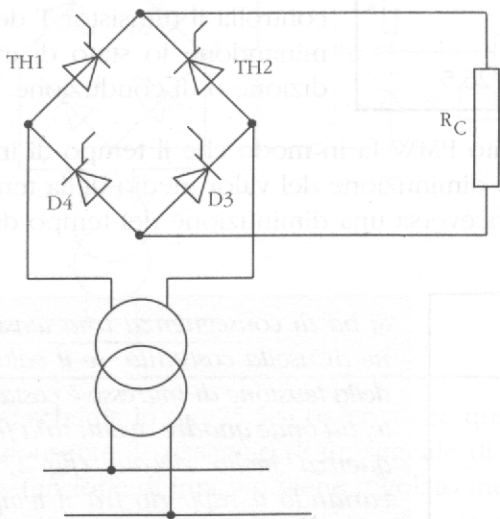




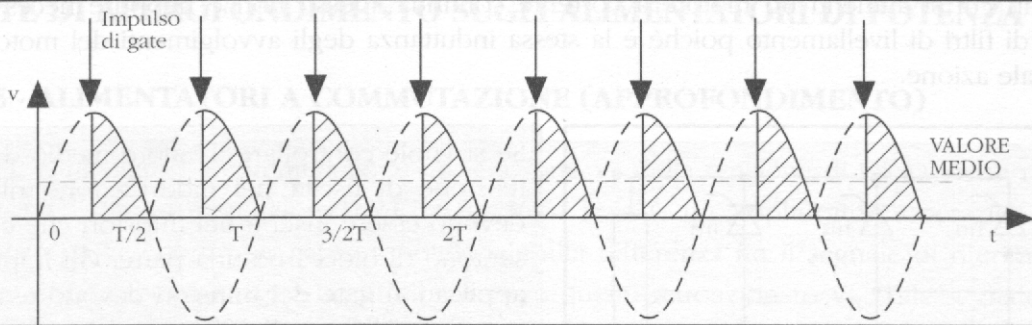


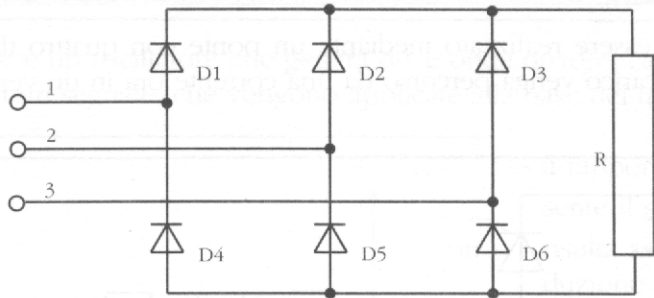


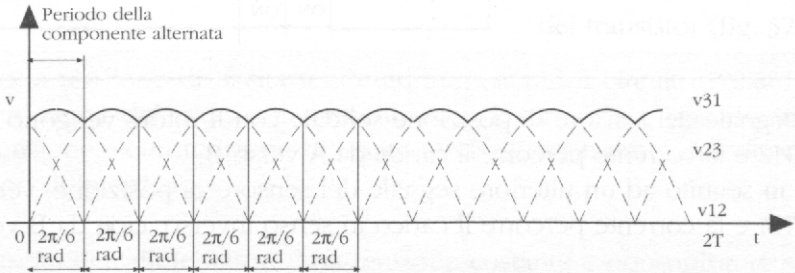
29.5

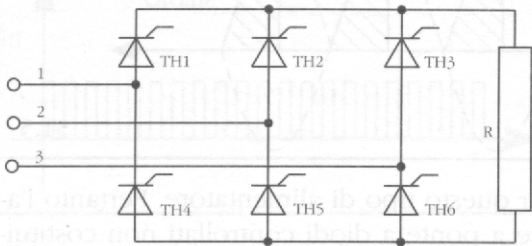


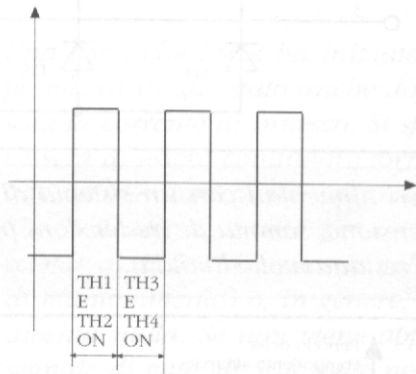
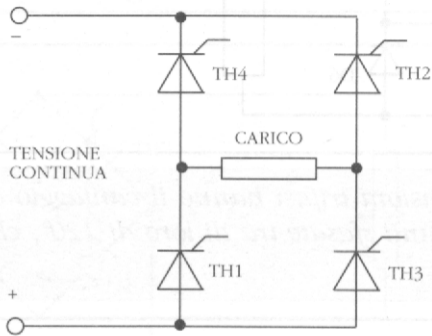
30.5

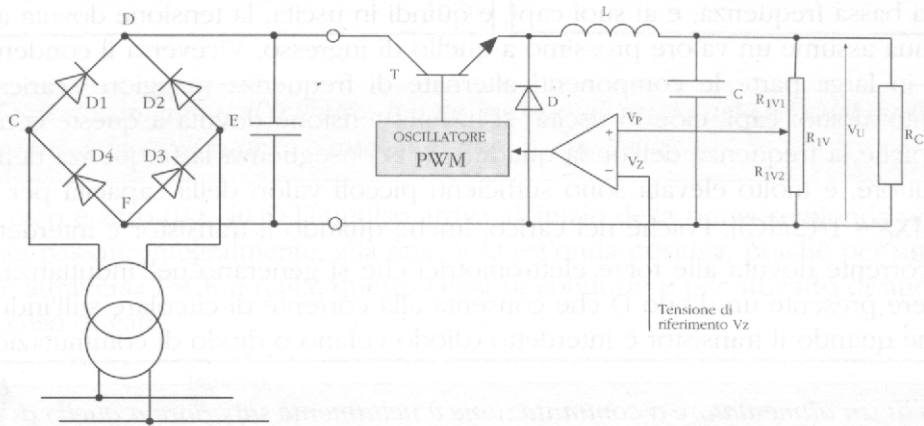




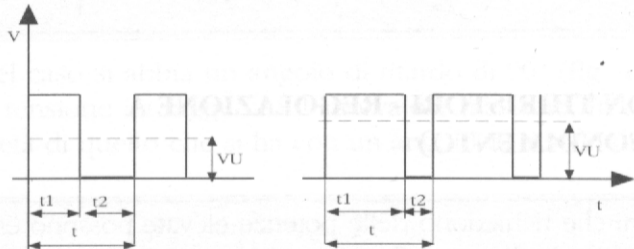


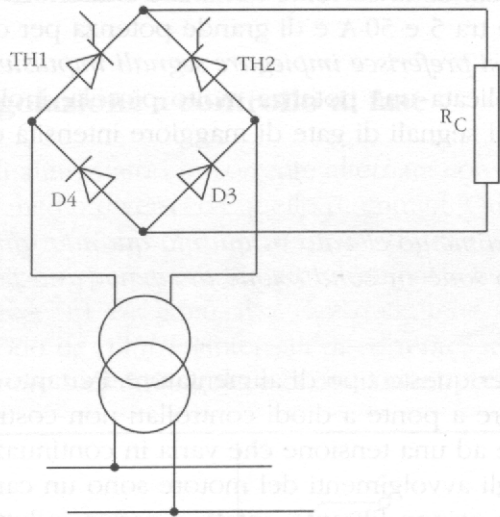




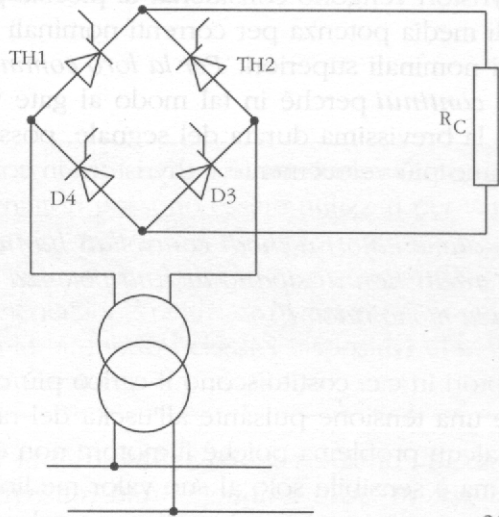


Tensione di riferimento V_Z

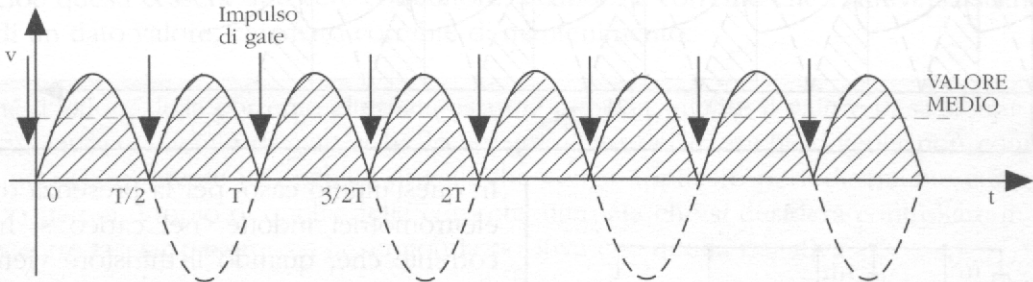


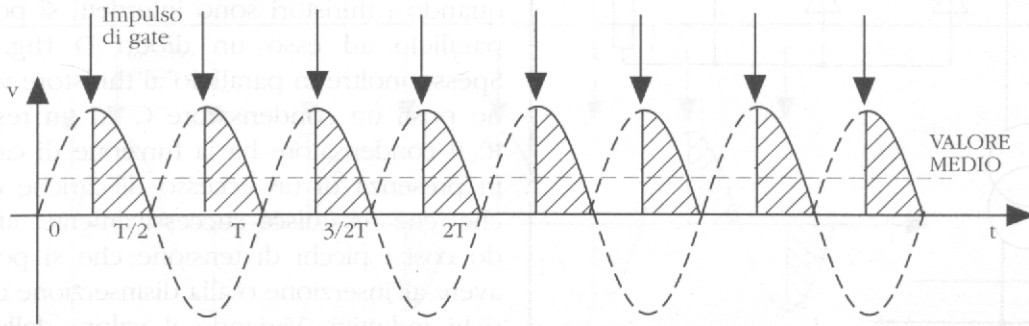


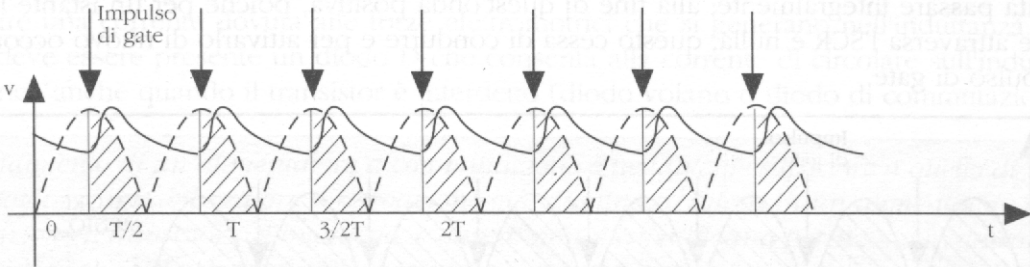
38.5

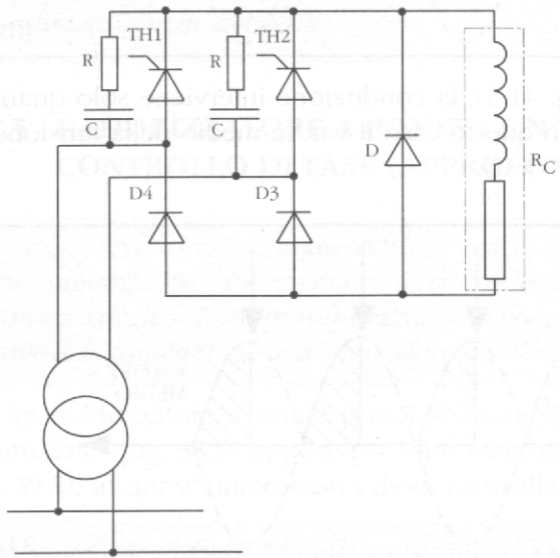


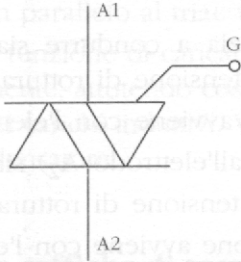
39.5

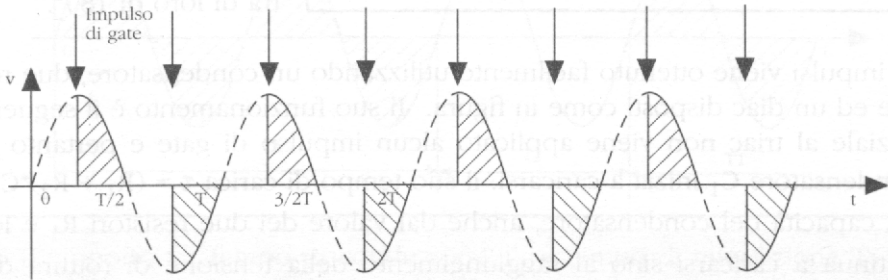


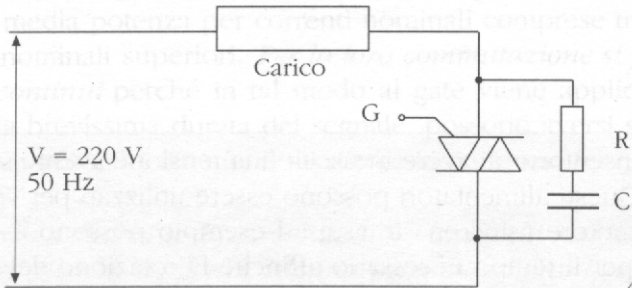


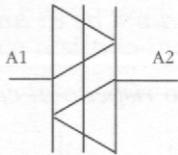
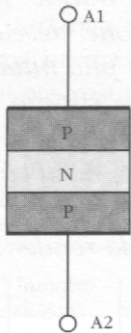


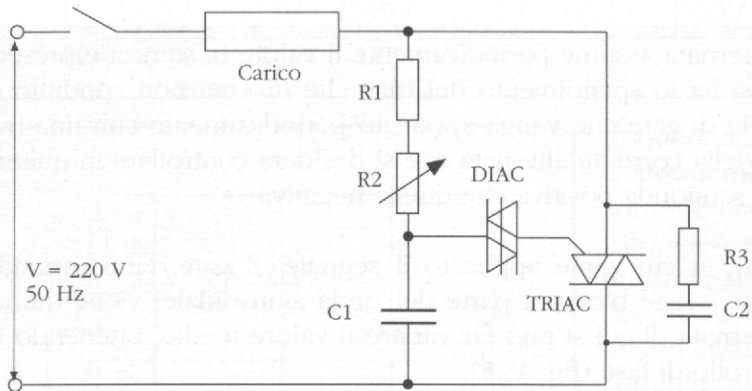


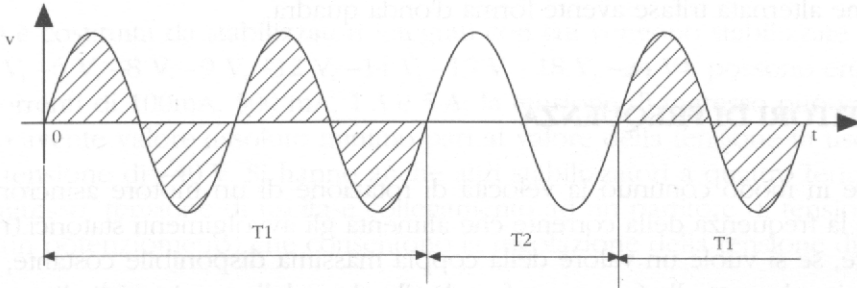


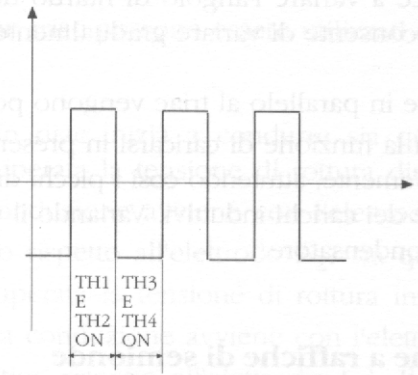
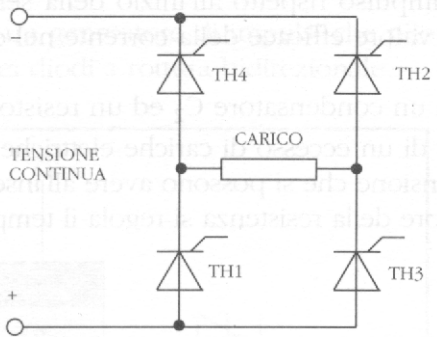












CORRENTE
ALTERNATA
TRIFASE

CORRENTE
ALTERNATA
TRIFASE

RADDRIZZATORE
A THIRISTORI

CORRENTE
CONTINUA

INVERTITORE
A THIRISTORI

SEGNALI DI
GATE

SEGNALI DI
GATE

