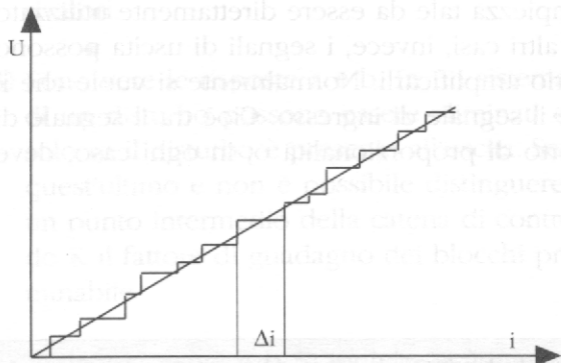
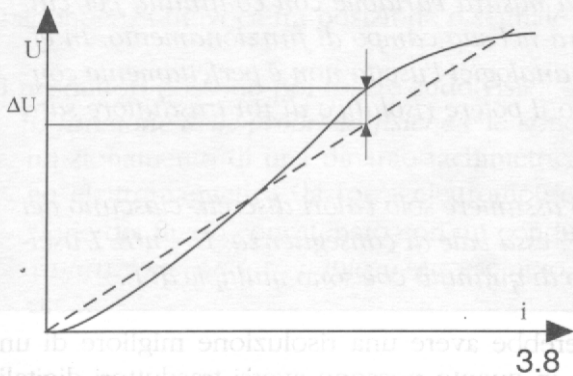
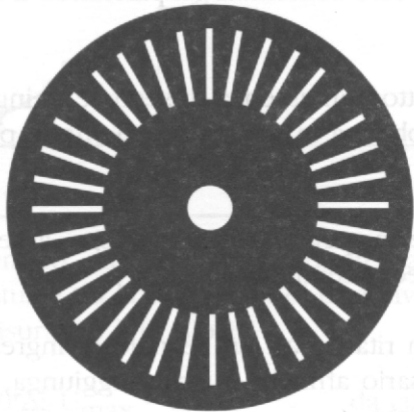


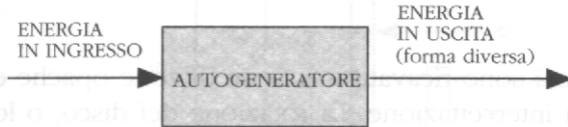
ad esempio, con cui si ottiene una tensione di uscita in corrente con
proporzionale alla velocità di rotazione dell'albero, è un trasduttore analogico.



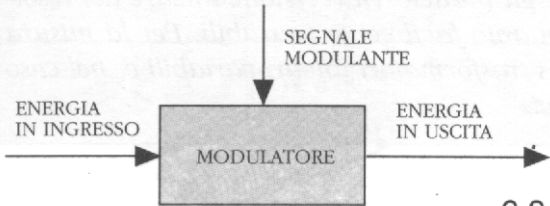




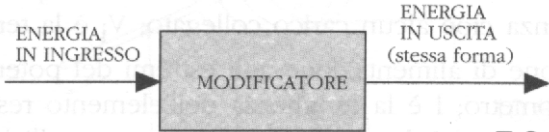
4.8



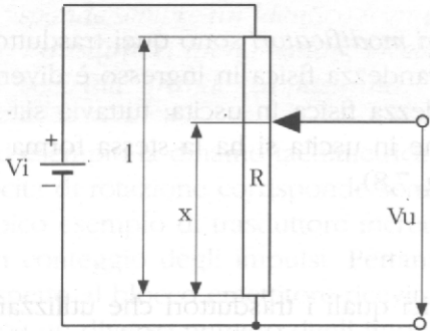
5.8



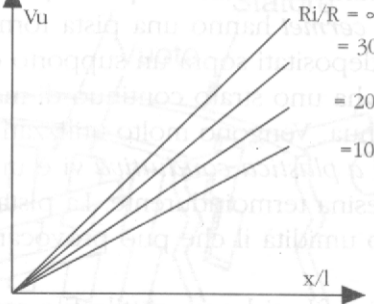
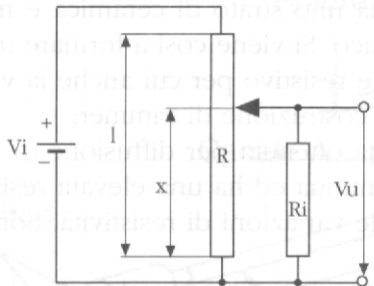
6.8

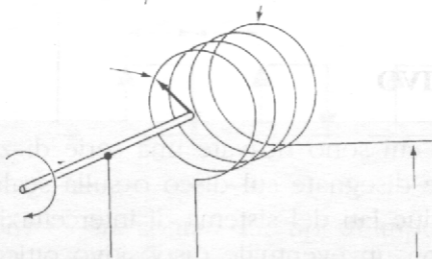
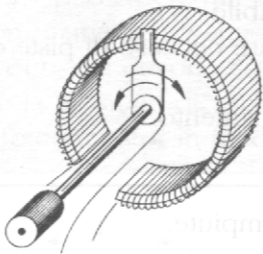
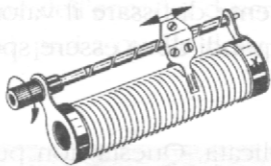


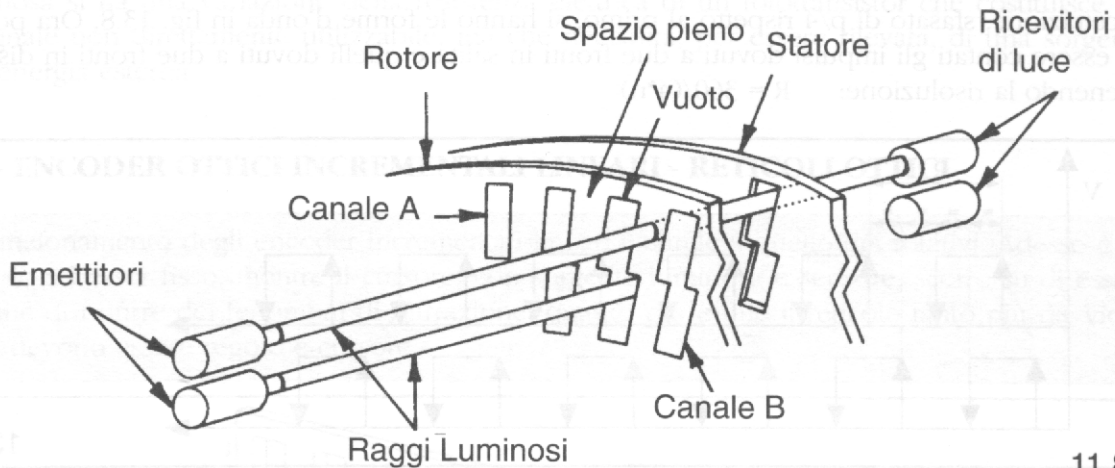
7.8

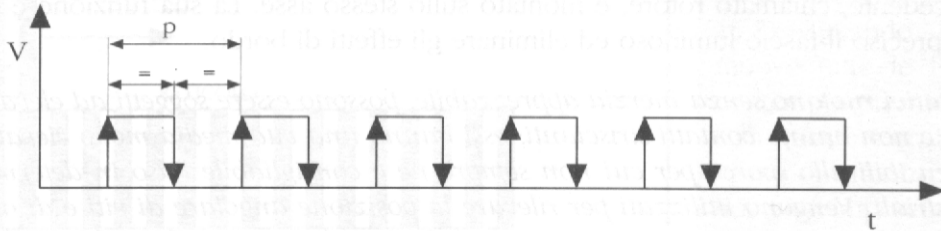


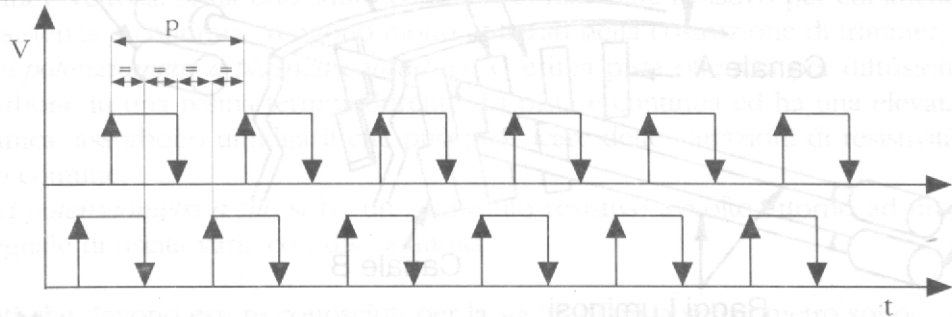
8.8

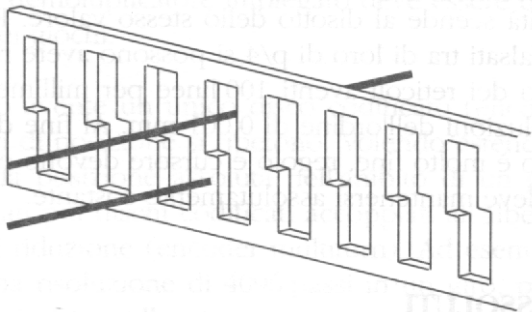










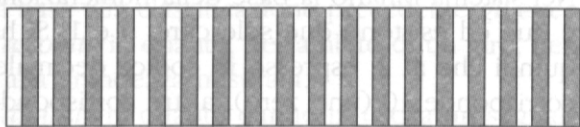


CURSORE

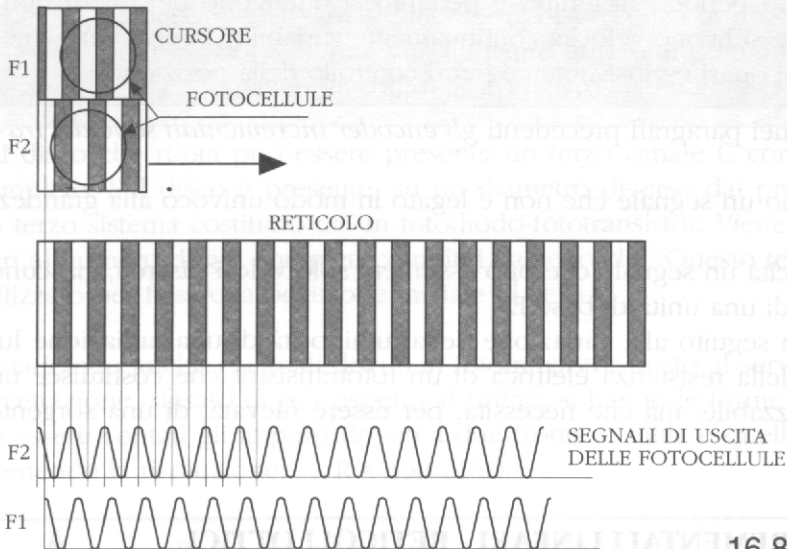
FOTOCELLULA

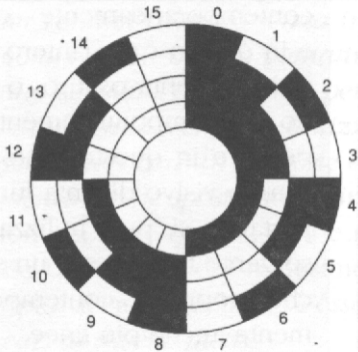


RETICOLO

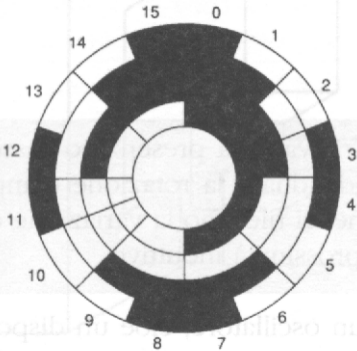


SEGNALE DI USCITA
DELLA FOTOCELLULA

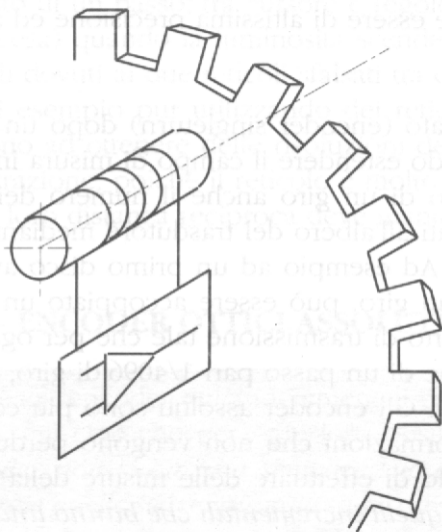


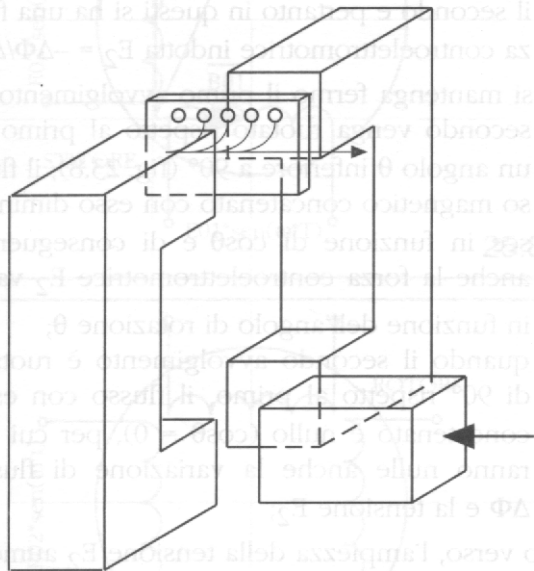


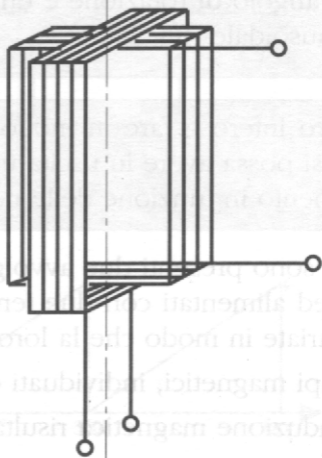
17.8

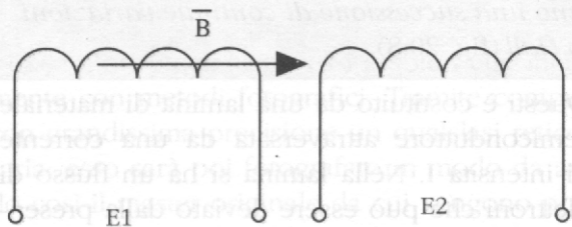


18.8

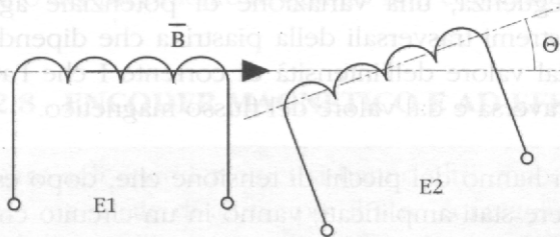




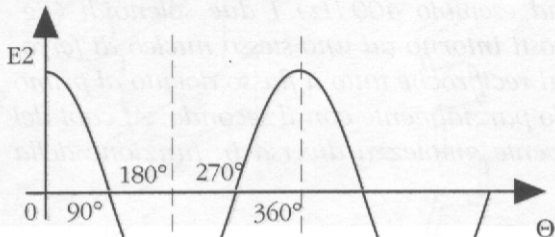




22.8



23.8



$E_{02} \cdot \text{sen}(\omega \cdot t)$

$\overline{B_{02}}$

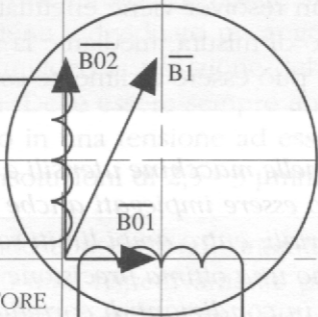
$\overline{B_1}$

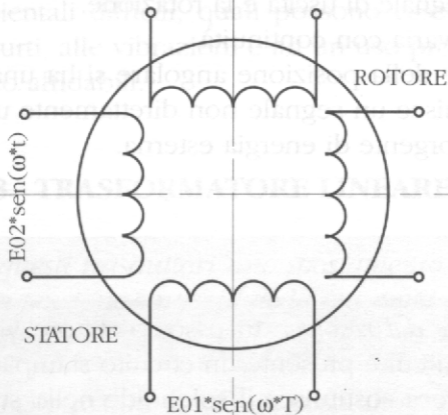
$\overline{B_{01}}$

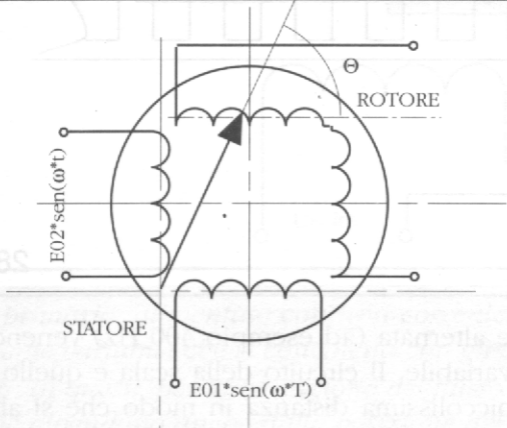
STATORE

$E_{01} \cdot \text{sen}(\omega \cdot t)$

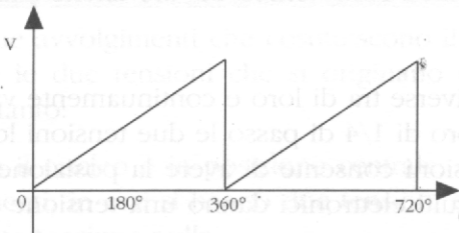
25.8

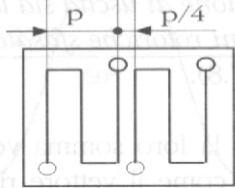
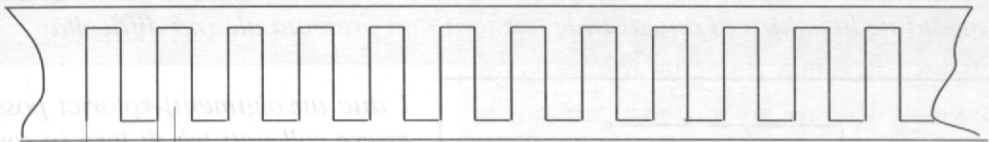


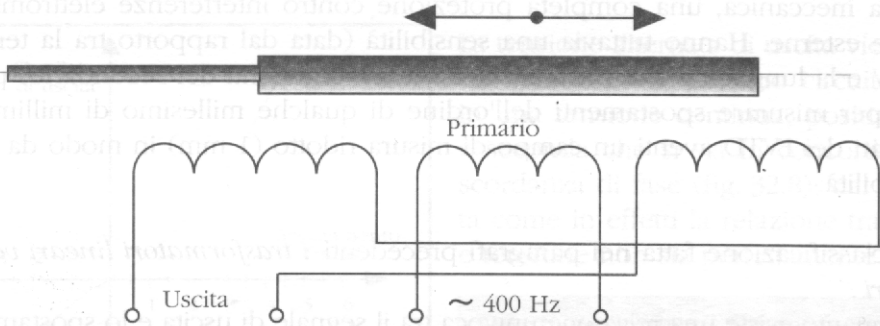




Tensione V proporzionale
all'angolo di sfasamento Θ





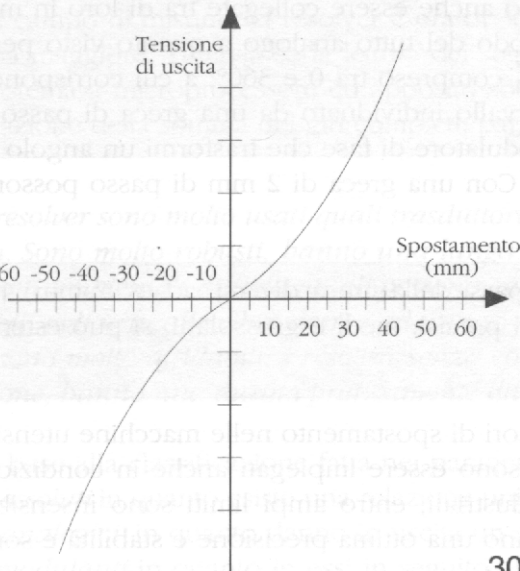


Tensione
di uscita

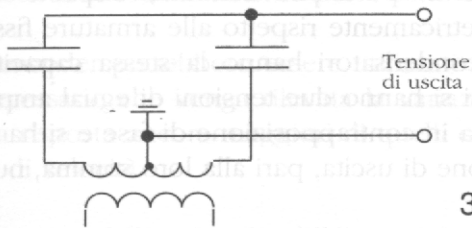
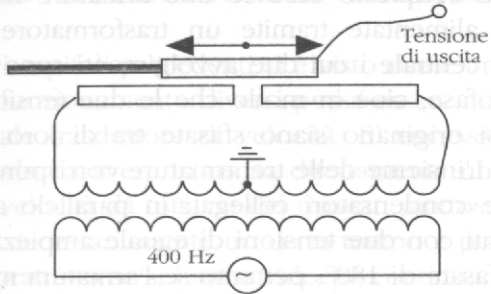
-60 -50 -40 -30 -20 -10

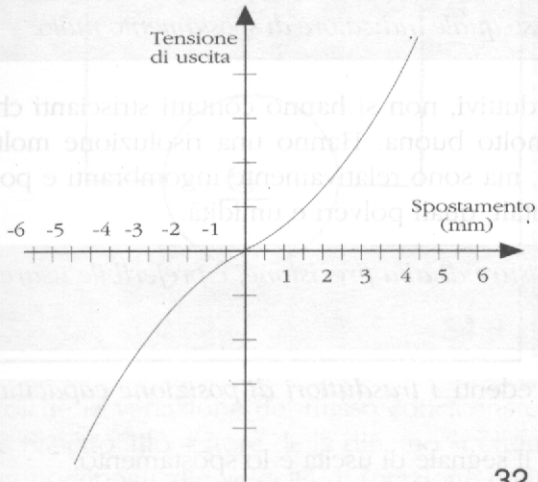
Spostamento
(mm)

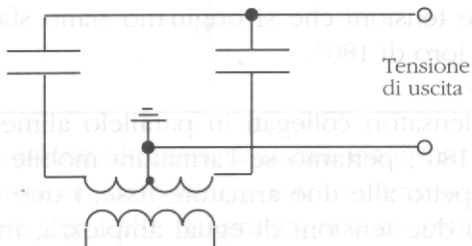
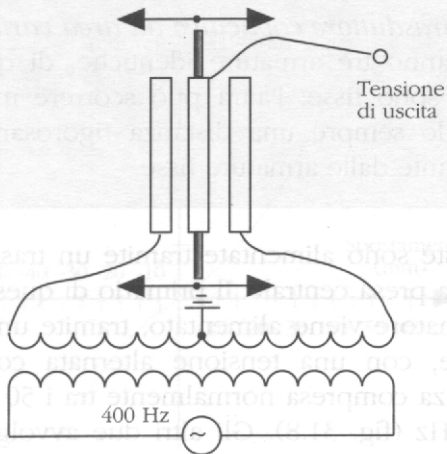
10 20 30 40 50 60

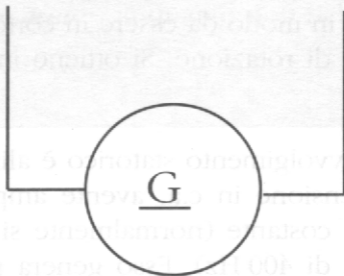


Spostamento (mm)	Tensione di uscita
-60	-1.5
-50	-2.5
-40	-4.5
-30	-8.0
-20	-14.0
-10	-23.0
0	0
10	23.0
20	44.0
30	80.0
40	140.0
50	250.0
60	450.0



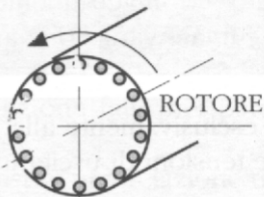






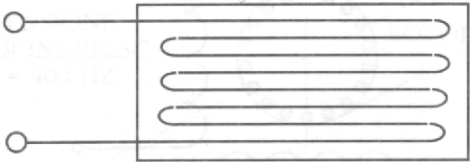
TENSIONE
DI INGRESSO
 $f = 400 \text{ HZ}$

STATORE

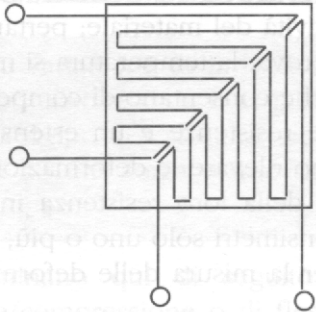


ROTORE

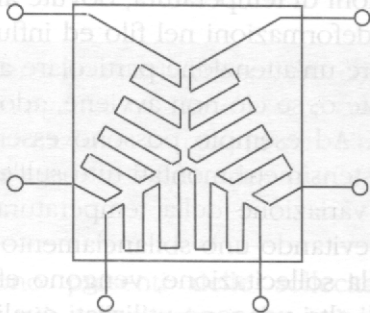
TENSIONE
DI USCITA



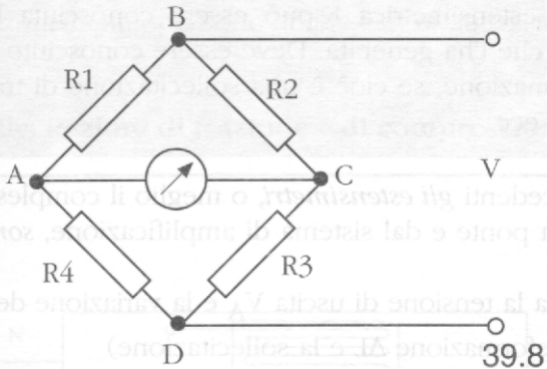
36.8

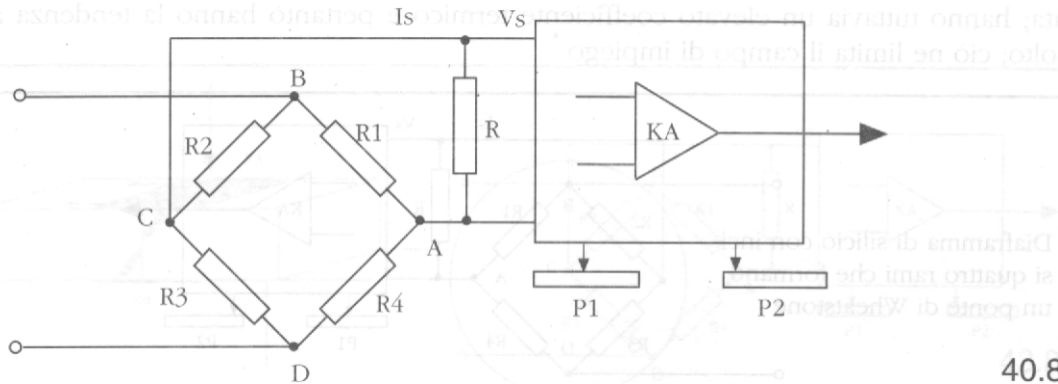


37.8

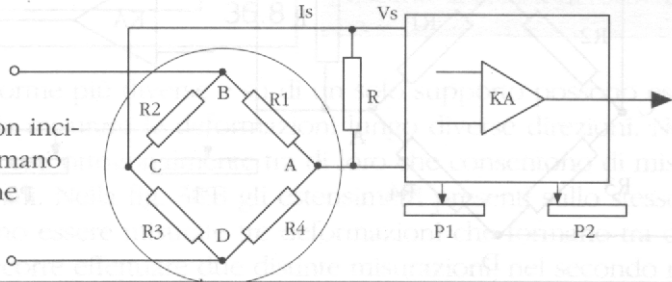


38.8

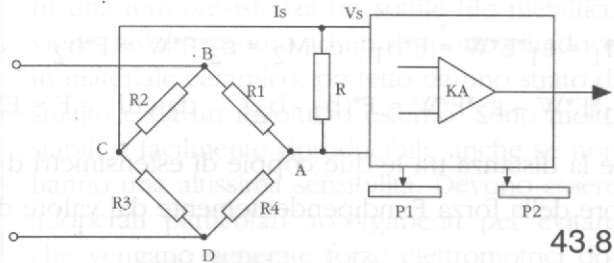
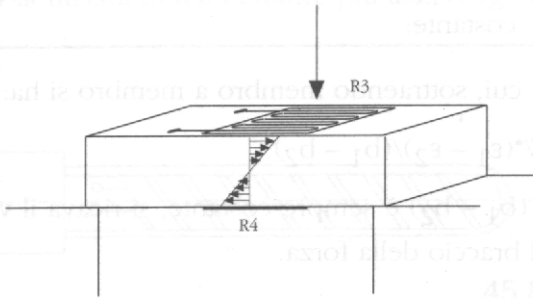


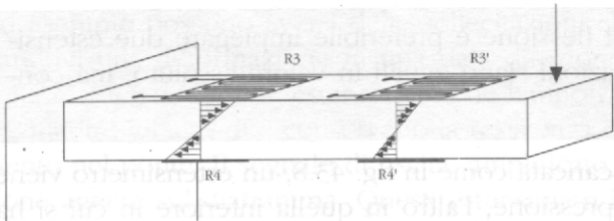


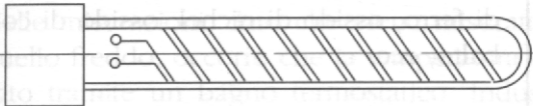
Diaframma di silicio con incisi quattro rami che formano un ponte di Wheatstone





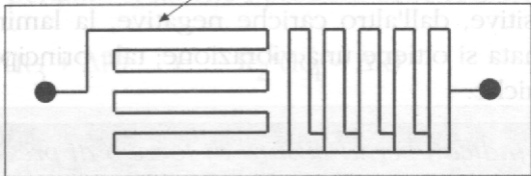




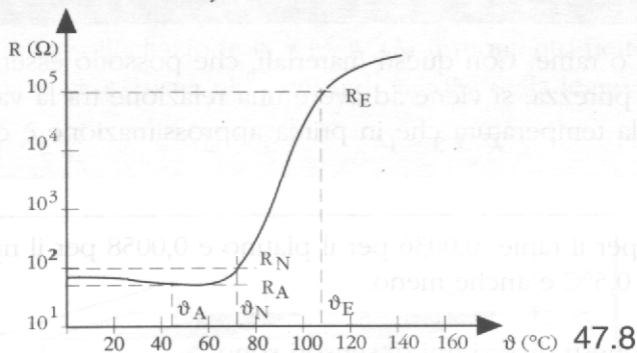
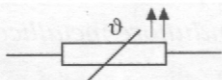


45.8

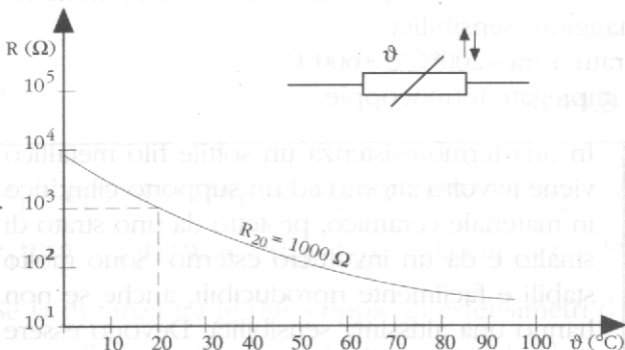
Strato di platino



Sezione per
la taratura



47.8



48.8

Riferimento a
temperatura costante



metallo a

T_0

metallo b

T_1

Voltmetro

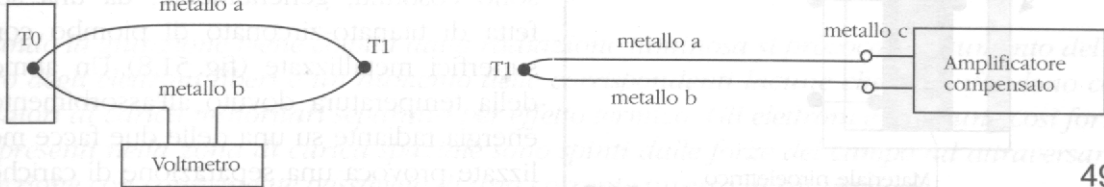
metallo a

T_1

metallo b

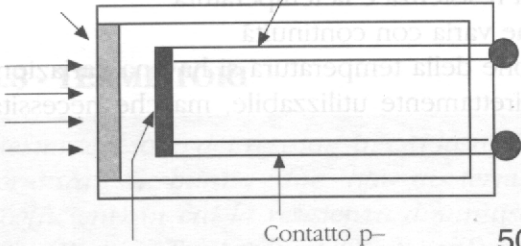
metallo c

Amplificatore
compensato



Finestra

Contatto p+

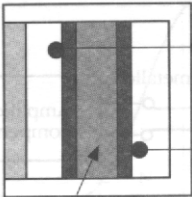


Collettore

Contatto p-

50.8

Finestra



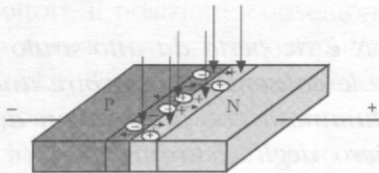
Materiale piroelettrico
con superfici metallizzate

51.8

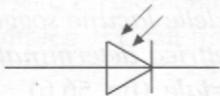


52.8

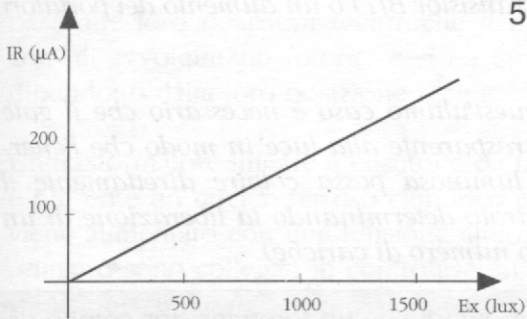
RADIAZIONI
LUMINOSE

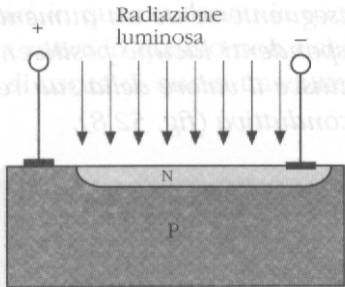


Zona di carica
spaziale



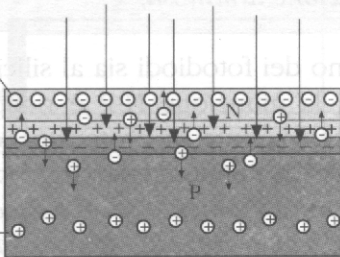
53.8





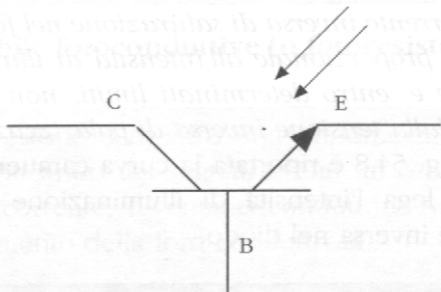
Radiazioni luminose

Elettroni
liberati



Lacune
liberate

56.6



57.6