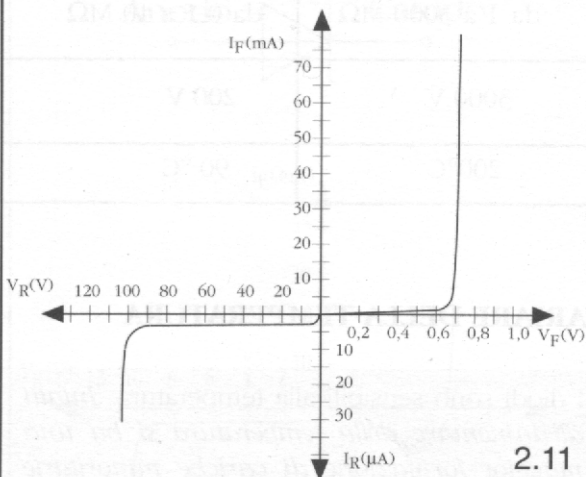
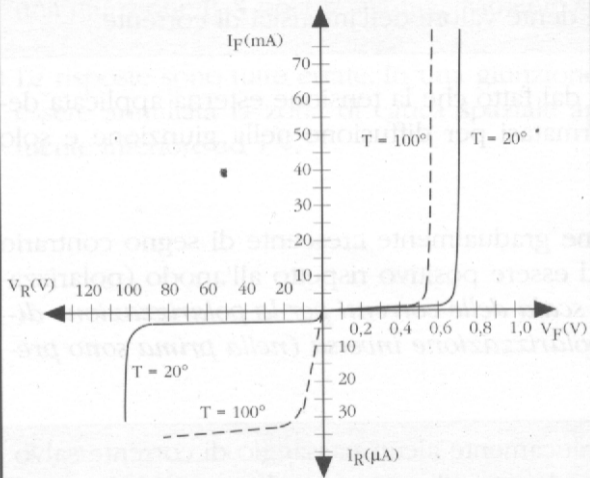


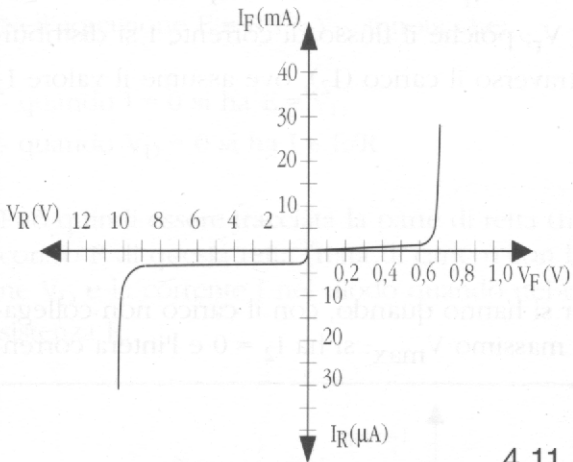
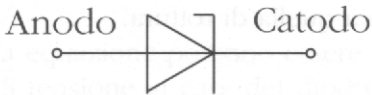
1.11

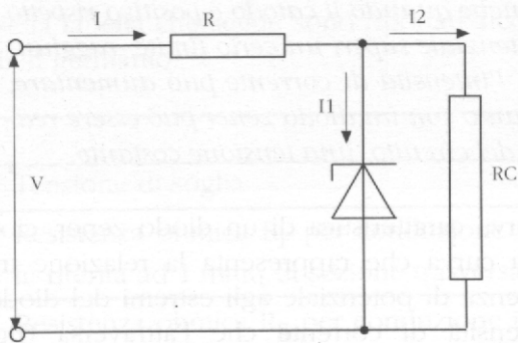


2.11

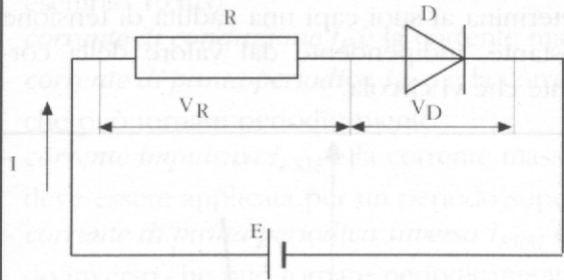
	SILICIO	GERMANIO
Tensione di soglia	0,7 V	0,3 V
Resistenza ohmica R_F per conduzione diretta riferita ad 1 mmq di sezione trasversale	da 2 a 50 Ω	da 5 a 100 Ω
Resistenza ohmica R_R per conduzione inversa riferita ad 1 mmq di sezione trasversale	da 1 a 3000 M Ω	da 0,1 a 10 M Ω
Tensione inversa max cui può essere sottoposto il diodo	3000 V	200 V
Temperatura max alla giunzione	200°C	90 °C

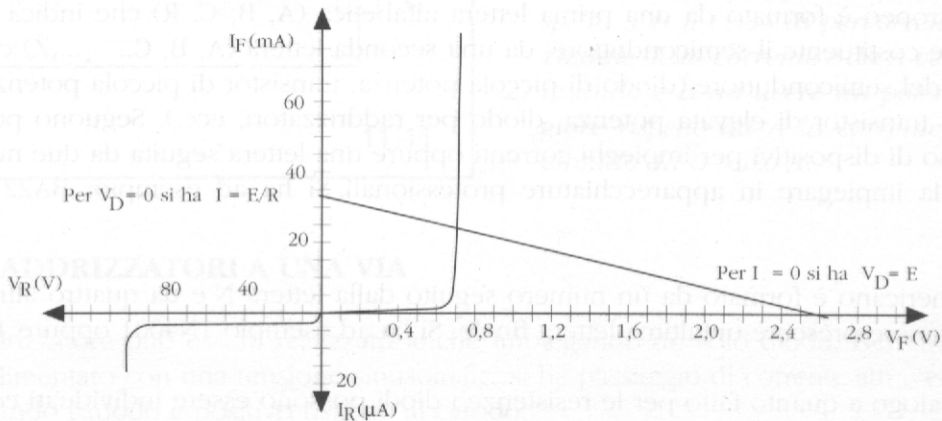


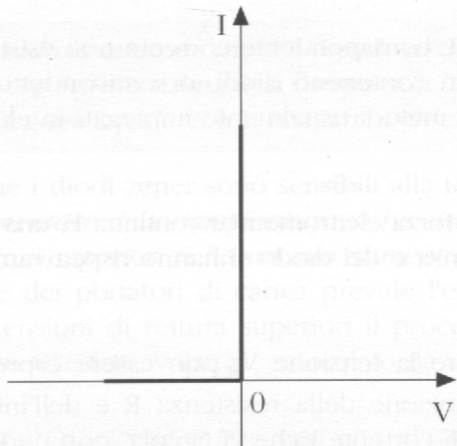




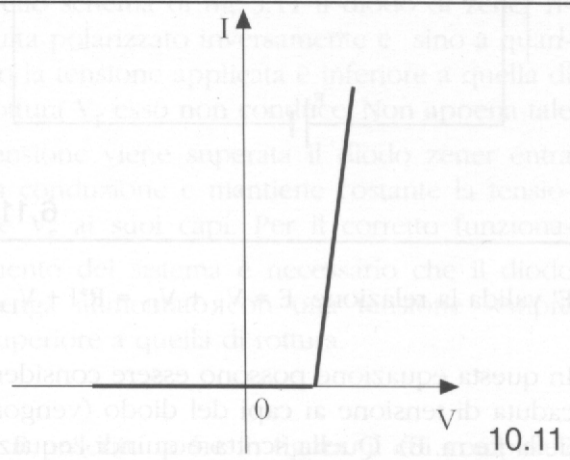
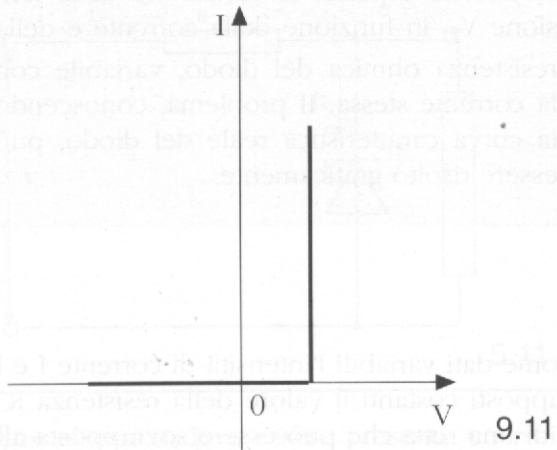
5.11

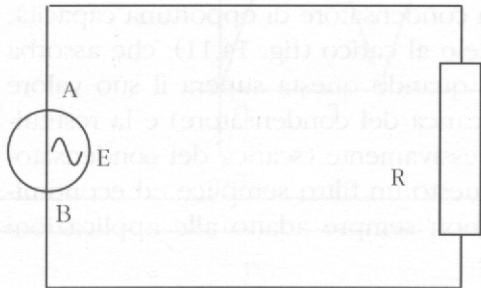


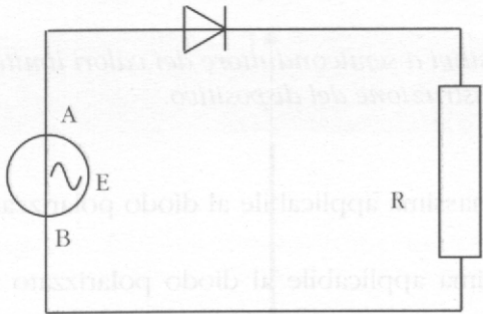




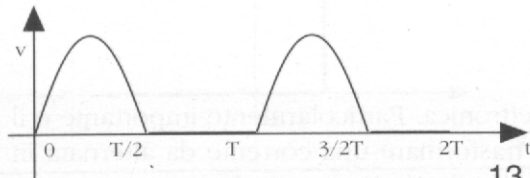
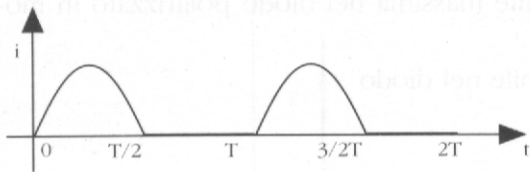
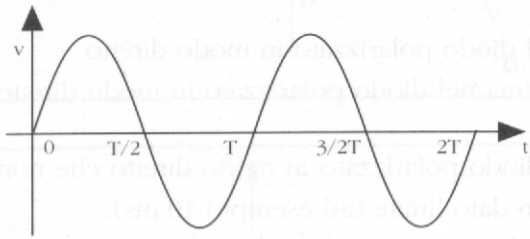
8.11

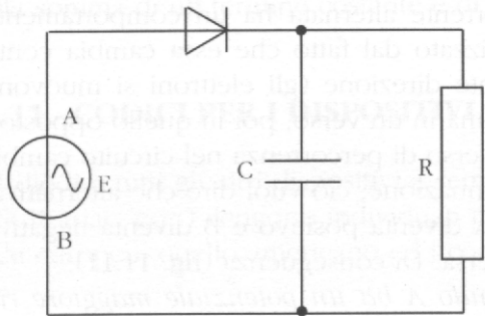




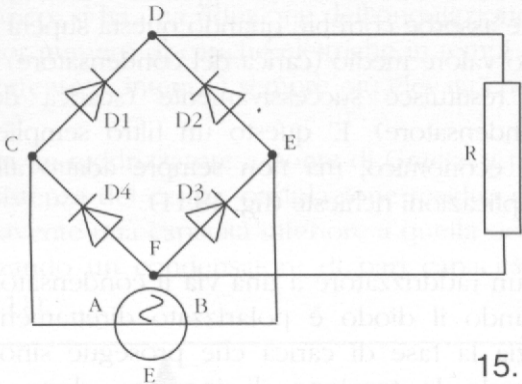


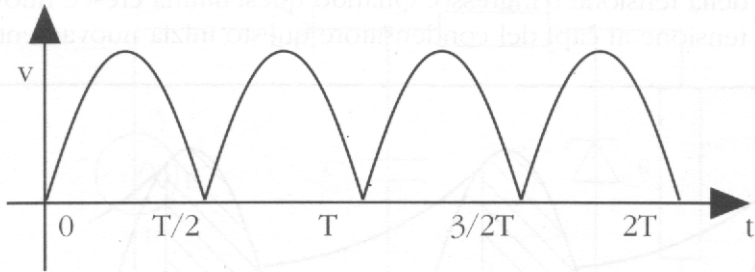
12.11

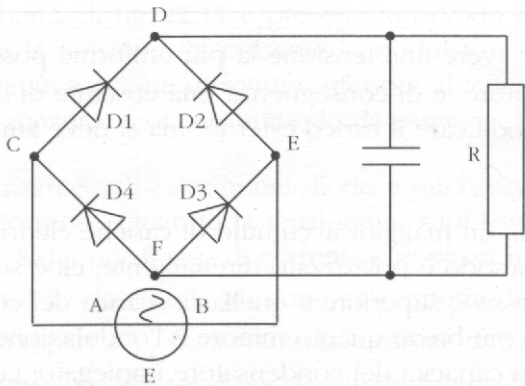




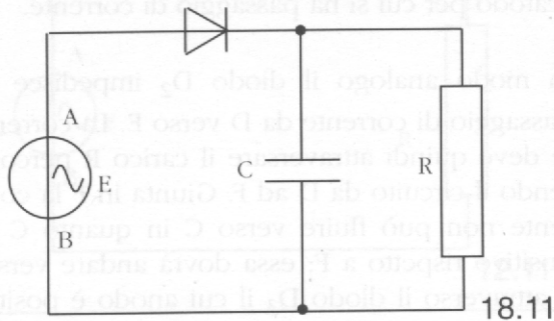
14.11



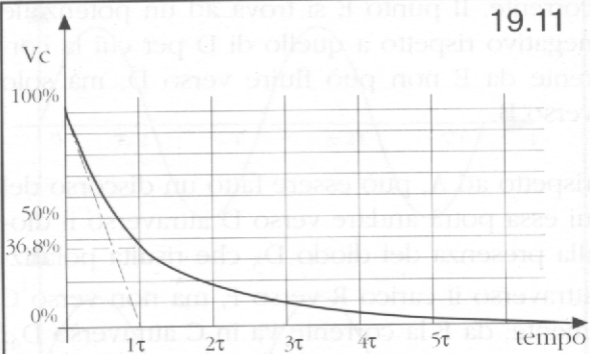




17.11



18.11



19.11

